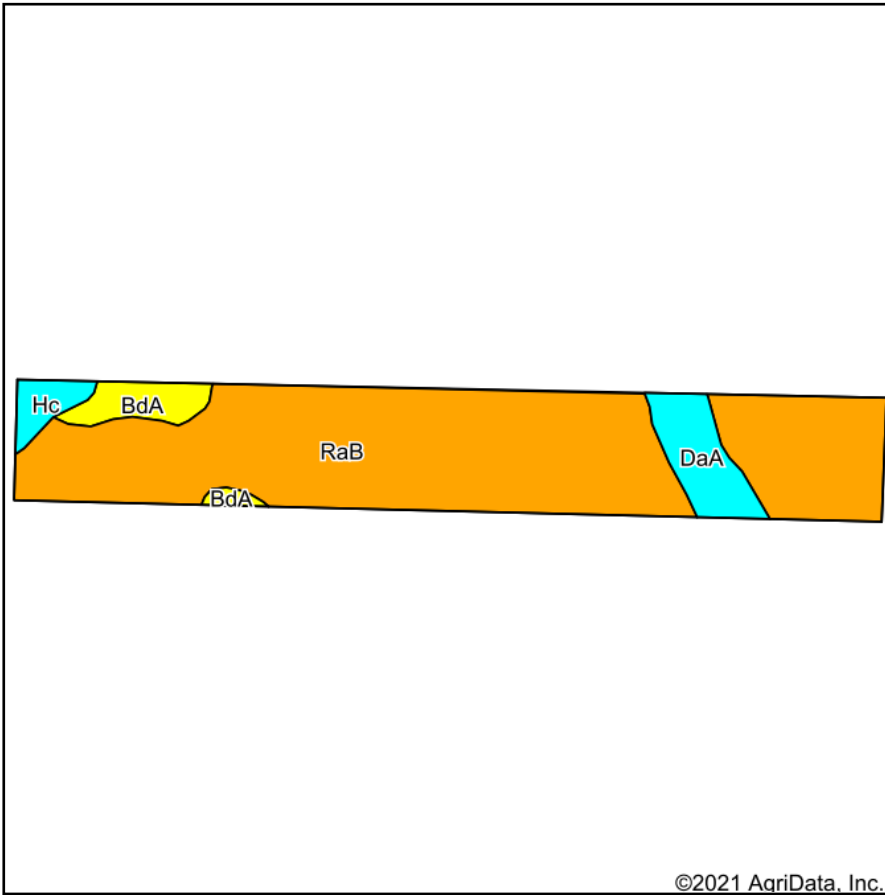
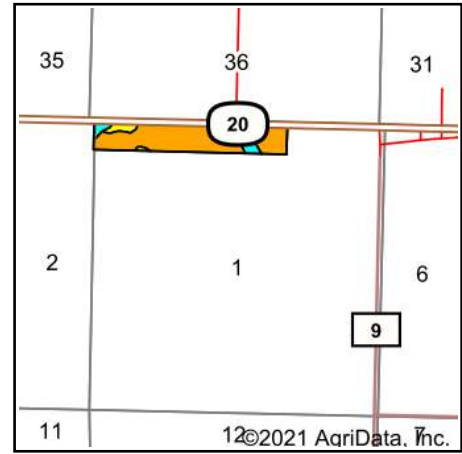


Soils Map



Soils data provided by USDA and NRCS.

©2021 AgriData, Inc.



State: **South Dakota**
 County: **Dewey**
 Location: **1-17N-27E**
 Township: **North Dewey**
 Acres: **40.83**
 Date: **8/10/2021**



Maps Provided By:



© AgriData, Inc. 2021

www.AgriDataInc.com



Area Symbol: SD041, Soil Area Version: 25

| Code | Soil Description | Acres | Percent of field | PI Legend | Non-Irr Class *c | Irr Class *c | Productivity Index |
|-------------------------|---|-------|------------------|-----------|------------------|--------------|--------------------|
| RaB | Reeder loam, 3 to 6 percent slopes | 34.29 | 84.0% | | Ile | Ile | 78 |
| DaA | Daglum silt loam, 0 to 2 percent slopes | 3.11 | 7.6% | | IVs | | 36 |
| BdA | Belfield-Daglum silt loams, 0 to 2 percent slopes | 2.22 | 5.4% | | IIIs | | 70 |
| Hc | Heil soils | 1.21 | 3.0% | | VIs | | 12 |
| Weighted Average | | | | | | | 72.4 |

*c: Using Capabilities Class Dominant Condition Aggregation Method
 Soils data provided by USDA and NRCS.