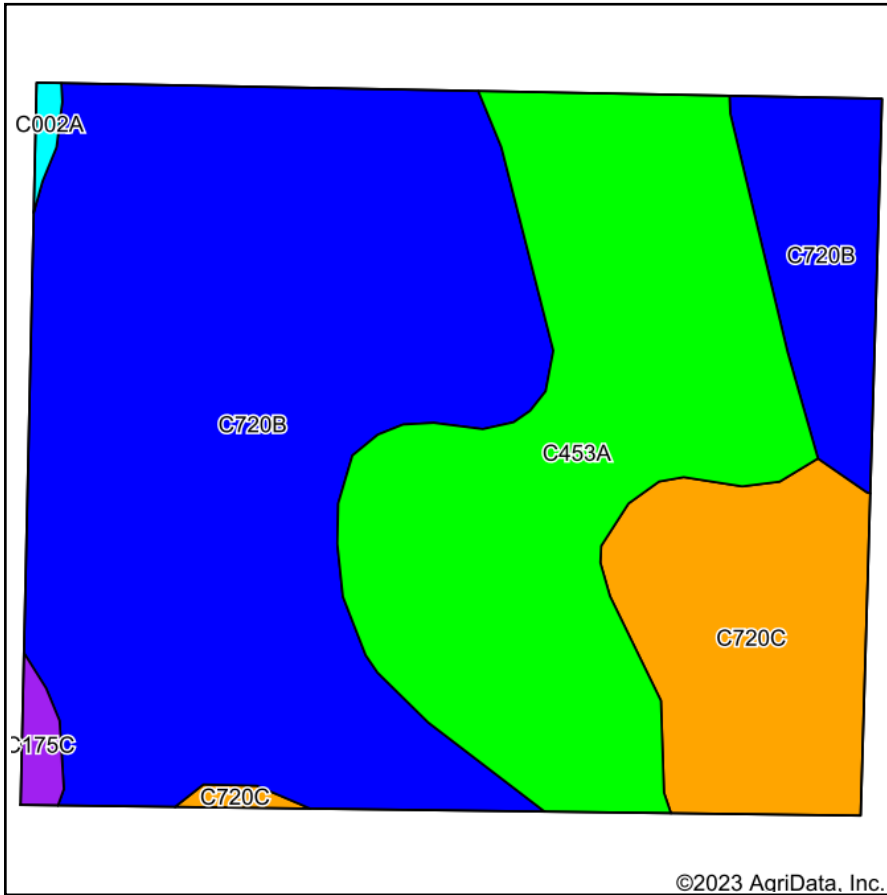
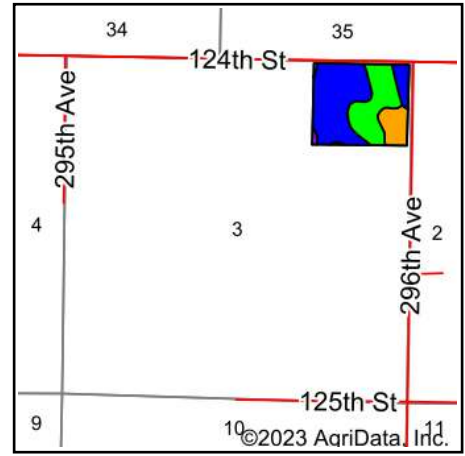


Soils Map



Soils data provided by USDA and NRCS.



State: **South Dakota**
 County: **Walworth**
 Location: **3-124N-78W**
 Township: **West Walworth**
 Acres: **40.79**
 Date: **6/19/2023**



Maps Provided By:



© AgriData, Inc. 2023

www.AgriDataInc.com



Area Symbol: SD129, Soil Area Version: 25

| Code | Soil Description | Acres | Percent of field | PI Legend | Non-Irr Class *c | Productivity Index |
|-------------------------|---|-------|------------------|-----------|------------------|--------------------|
| C720B | Highmore silt loam, cool, 2 to 6 percent slopes | 22.53 | 55.2% | | Ile | 82 |
| C453A | Mobridge silt loam, cool, 0 to 2 percent slopes | 12.51 | 30.7% | | Ilc | 93 |
| C720C | Highmore silt loam, cool, 6 to 9 percent slopes | 5.28 | 12.9% | | IIIe | 73 |
| C175C | Zahl-Williams-Zahill complex, 6 to 9 percent slopes | 0.32 | 0.8% | | IVe | 56 |
| C002A | Tonka silt loam, 0 to 1 percent slopes | 0.15 | 0.4% | | IVw | 45 |
| Weighted Average | | | | | 2.15 | 83.9 |

*c: Using Capabilities Class Dominant Condition Aggregation Method
 Soils data provided by USDA and NRCS.