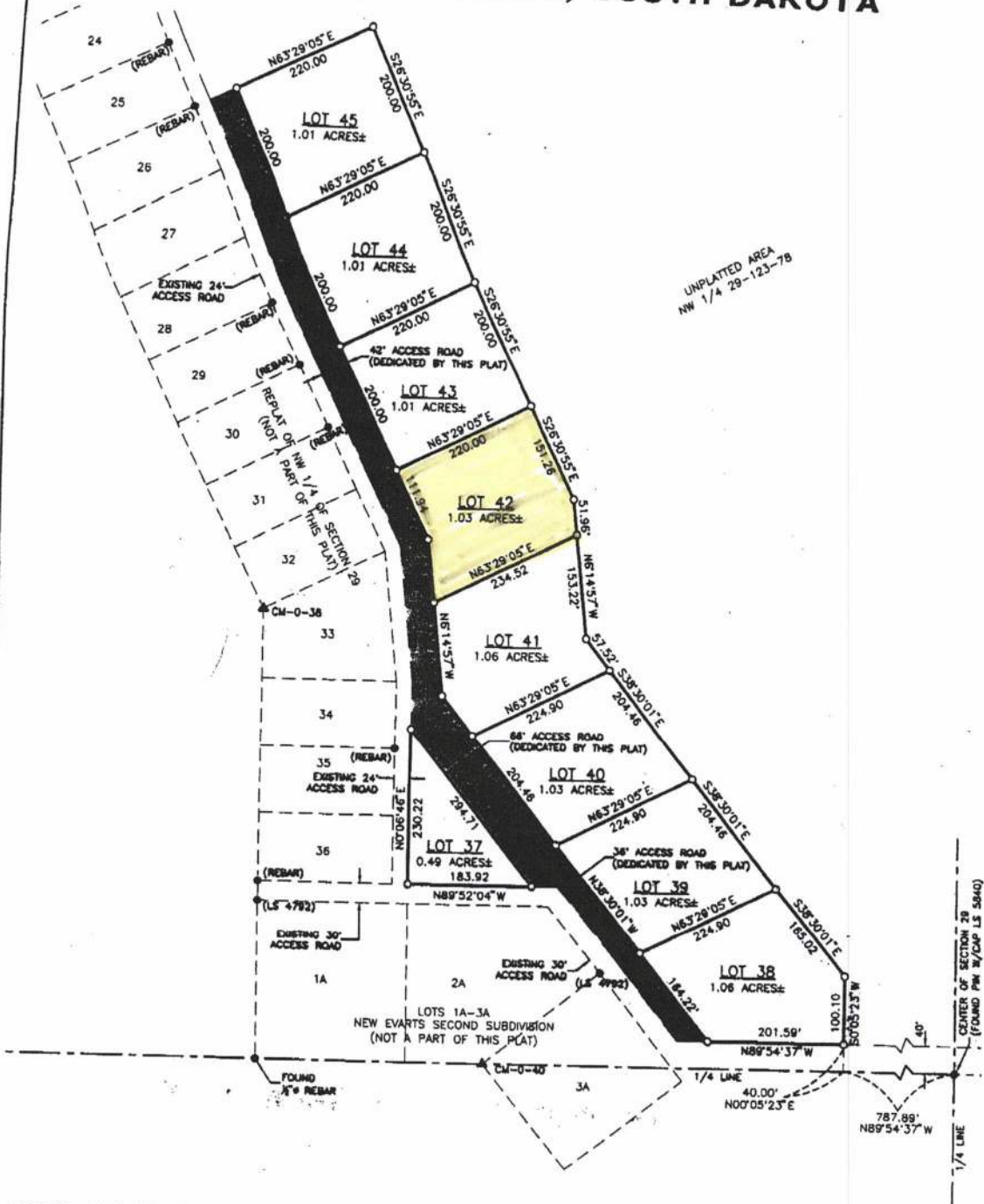


**PLAT SHOWING
 LOTS 37-45, 2nd REPLAT OF
 THE NW 1/4 OF SECTION 29, T123N R78W
 OF THE 5th P.M.
 WALWORTH COUNTY, SOUTH DAKOTA**



BASIS OF BEARINGS

GPS

LEGEND

● PIN FOUND (AS NOTED)

○ PIN SET (LS 4792)

▲ CORPUS OF ENGINEERS MARKER

ACCESS ROAD DEDICATION

PREPARED BY:

CLARK
 ENGINEERING CORPORATION

2301 9th Ave. NE, Suite 125/
 Aberdeen, SD 57401
 Office: (605) 225-3494
 Fax: (605) 225-3433

