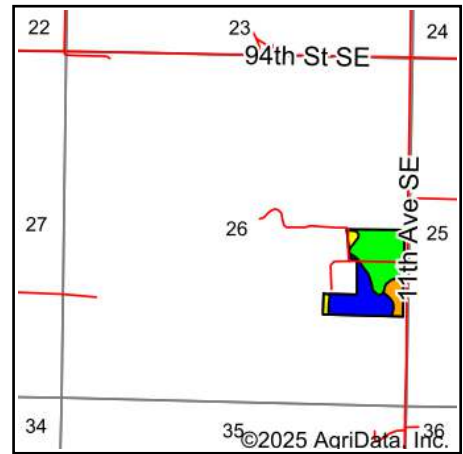
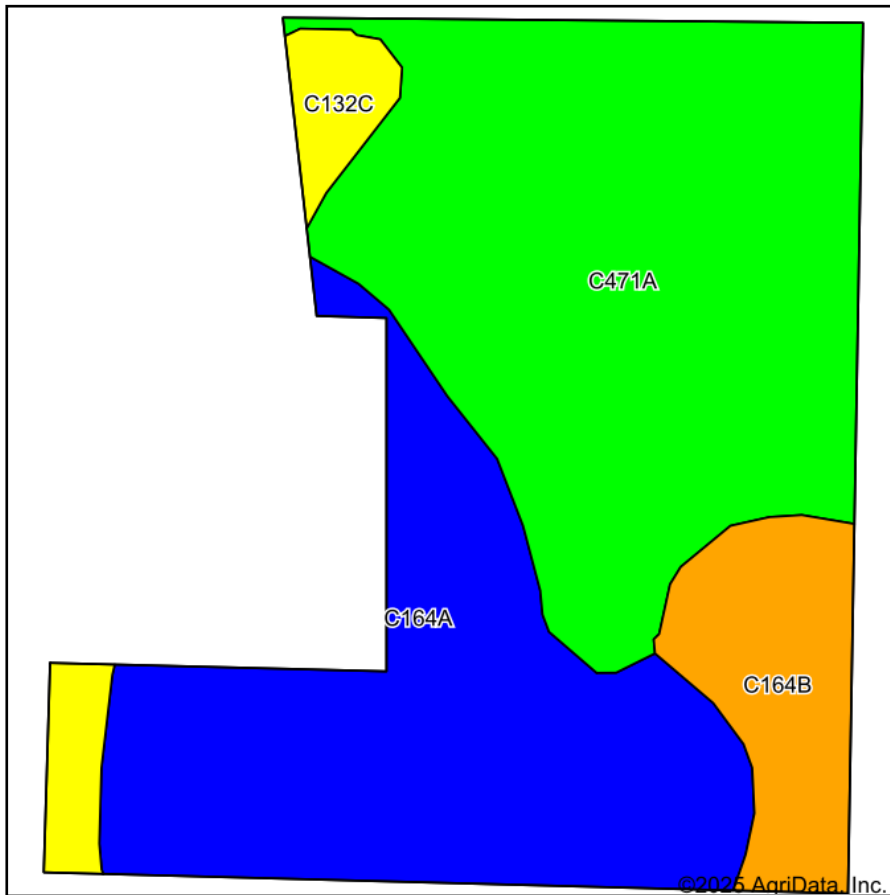


Soils Map



State: **North Dakota**
 County: **Emmons**
 Location: **26-130N-76W**
 Township: **South Emmons**
 Acres: **26.64**
 Date: **1/14/2025**



Maps Provided By:



Soils data provided by USDA and NRCS.

© AgriData, Inc. 2023

www.AgriDataInc.com

Area Symbol: ND029, Soil Area Version: 29

Code	Soil Description	Acres	Percent of field	PI Legend	Non-Irr Class *c	Productivity Index
C471A	Grail silty clay loam, 0 to 2 percent slopes	13.18	49.5%		IIc	95
C164A	Williams-Falkirk loams, 0 to 3 percent slopes	9.37	35.2%		IIc	85
C164B	Williams-Falkirk loams, 3 to 6 percent slopes	2.73	10.2%		Ile	79
C132C	Williams-Zahl-Zahill complex, 6 to 9 percent slopes	1.36	5.1%		IIIe	61
Weighted Average					2.05	88.1

*c: Using Capabilities Class Dominant Condition Aggregation Method